

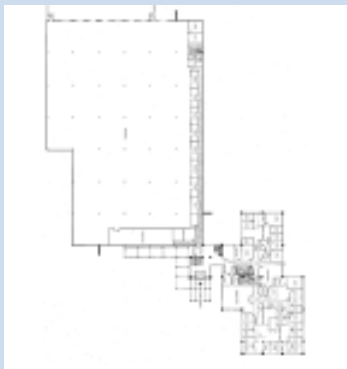
Project Location:
Georgetown, MA

Project Scope:
New Construction

Building Size:
75,000 s.f.

Building Type:
Industrial/Office/Warehouse

When Salomon North American decided to relocate their United States corporate headquarters and distribution facility to the New England area, CSS Architects was invited to perform specialized services for both building and interior design. The work included the design of a 55,000 square foot storage and light manufacturing building and a 20,000 square foot corporate headquarters, combined under one roof. The office area included a reception area, support area, computer room, lunchroom, conference rooms, product display room, open offices and executive offices. The warehouse and light manufacturing area included an automated storage and retrieval system, truck dock loading warehouse area, shipper's office, and ski binding assembly area.



Exterior View



Site Plan



Exterior View



CSS Architects Incorporated

107 Audubon Road || Building 2, Suite 300 || Wakefield, MA 01880

Phone (781) 245-8400 || Fax (781) 245-9372 || www.cssarchitects.com