

Project Location:
Marblehead, MA

Project Scope:
Restoration/Renovations

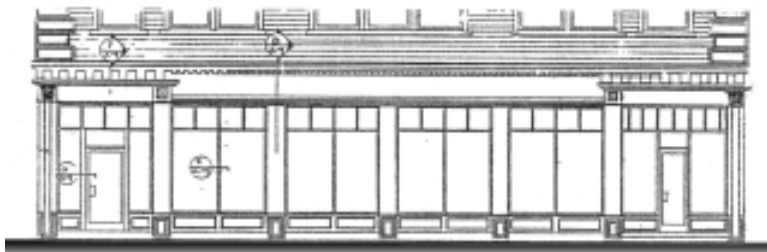
Building Size:
18,000 s.f.

Building Type:
Mixed-Use/Restoration

The Osborne Building is a nineteenth century structure that underwent major exterior restoration to achieve historic recognition at a highly visible crossroad in Marblehead, MA. The exterior of the building had to be stripped and re-clad and windows had to be reproduced with materials that were acceptable by the Marblehead Historic Society. The interior of the building was made barrier-free with elevators and ramps. The ground floor is retail/office use, the second floor is office use and the third floor and loft are residential use. The residential loft floors are cut back to allow the large double hung windows to run uninterrupted for their full height.



View of Exterior Renovations



Pleasant Street Elevation



View of Exterior Renovations

