

Project Location:

Lynn, MA

Project Scope:

New Construction

Building Size:

30,000 s.f.

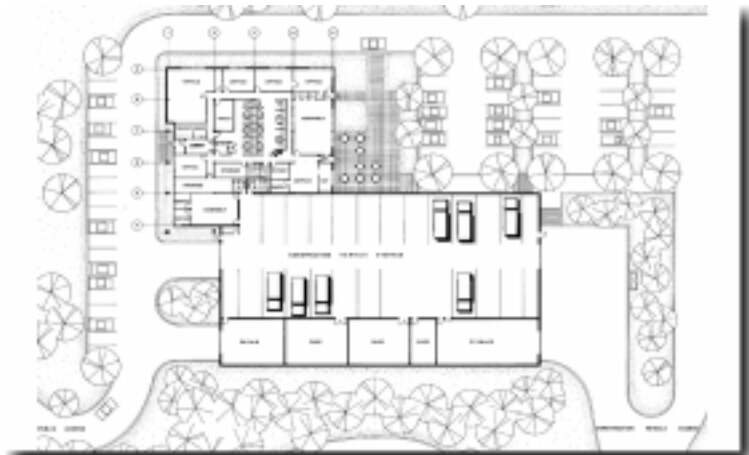
Building Type:

Municipal

The facility for the Lynn Water & Sewer Commission houses the administrative offices, engineering, vehicle storage, maintenance and equipment repair. The site provides parking for visitors, employees, trucks, tractor trailers and has underground fuel storage and fuel dispensers. The project won recognition as a budget-conscious facility at the 1989 Build Massachusetts Awards sponsored by the AGC. The design services included a feasibility study, subsurface exploration, civil engineering, architectural, structural, HVAC, mechanical and electrical engineering and design, interior design, landscape design and construction administration.



Aerial View



Site Plan



View of Interior

